

# DBArtisan

## MULTI-PLATFORM SOLUTION FOR DATABASE ADMINISTRATION, SECURITY AND PERFORMANCE

DBArtisan is a comprehensive database administration solution to manage multiple DBMSs from one central console. DBArtisan utilizes integrated performance analytics to maximize availability, performance, security and collaboration. DBArtisan's highly effective wizards arm users with the ability to efficiently perform migrations, monitor database environments and plan for space and capacity needs.

### WHY DBARTISAN?

In the current industry environment, data is now valued as a critical corporate asset. Managing and protecting data have risen to top-level priorities, especially in the face of government regulations and the ongoing risk of data breaches. These developments have led to new ways of thinking about data and how to effectively manage the data.

Every move made by an organization directly impacts the database systems its DBA manages. As the organization grows and changes, so does the role of the DBA. The DBA's role is key to keeping the database running at top performance and with predictability. With the expectation to be able to 'do more with less' in database environments that are constantly changing, DBAs need to be armed with the best tools. DBArtisan is the central console for multi-platform database administration. It streamlines common tasks and generates critical insight for long term performance. From a single interface, DBArtisan facilitates the management of major database platforms. The tool's highly effective wizards arm users with the ability to efficiently manage space, data analytics and performance.

### HIGHLIGHTS

- Manage multiple platforms from one UI
- Proactively manage space, data and performance with built-in analytics
- Easily find and fix performance issues using intelligent diagnostics
- Move schema and table data across different platforms with ease
- Protect data security with view, grant and revoke of permissions

#### STREAMLINE DATABASE ADMINISTRATION

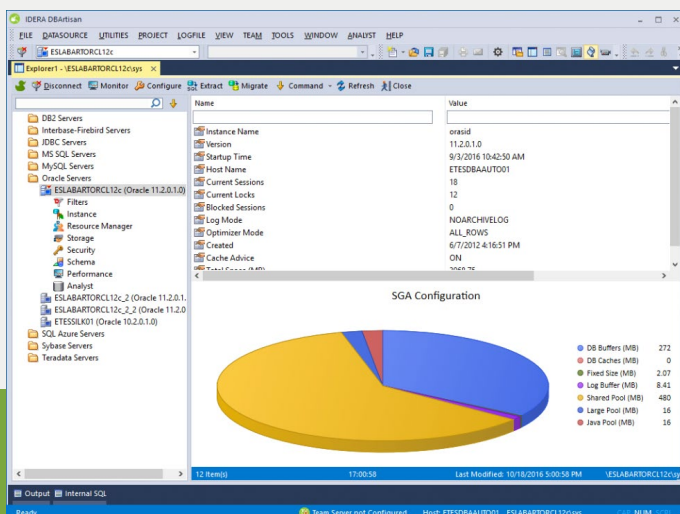
Simplify common administration tasks and easily access critical insights for long-term database performance. Establish and maintain database security whether you are managing an existing production database or setting up a new environment. Wizards and graphical editors provide rapid access to expedite tasks and reduce errors.

#### MANAGE MULTIPLE DBMS PLATFORMS FROM ONE CONSOLE

Proactively manage all major DBMSs (Microsoft SQL Server, Microsoft Azure SQL Database, Oracle Database, IBM Db2 LUW and z/OS, SAP Sybase ASE and IQ, MySQL, PostgreSQL, Pivotal Greenplum, Amazon Redshift, and Snowflake) from a single common interface. Reduce training requirements and streamline collaboration among teams across the organization. Manage multiple Oracle-specific schema object types and advanced SQL Server object properties including in-memory natively compiled tables / procedures / functions, column-store indexes, data compression, temporal tables, and data masking.

#### SIMPLIFY SPACE, DATA AND PERFORMANCE ANALYSIS

Proactively manage space, data and performance for optimal planning. Built-in process monitors and analysis tools give insights into valuable usage and session data. Superior SQL syntax construction helps you obtain more consistent performance gains.



Start for **FREE!**

# DBArtisan reaps 857% ROI and \$2 million in cost savings.

Forrester Consulting, The Total Economic Impact™ (TEI) Study



## DATABASE MANAGEMENT

**MULTI-PLATFORM ADMINISTRATION** Proactively manage major DBMSs (Microsoft SQL Server, Microsoft Azure SQL Database, Oracle Database, IBM Db2 LUW and z/OS, SAP Sybase ASE and IQ, MySQL, PostgreSQL, Pivotal Greenplum, Amazon Redshift, and Snowflake) from a single common interface. Use the tool on all supported platforms from a single license. Streamline and automate common and repetitive tasks with an easy-to-use GUI and powerful wizards.

**PROACTIVE DIAGNOSTICS** View detailed metrics and identify performance, capacity planning, and storage management issues before they become major problems.

**PERFORMANCE ANALYST** Provides intelligent analysis of real-time database and OS performance diagnostic information to troubleshoot and remedy performance problems.

**SERVER STORAGE LIST** View aggregate details of databases installed in a SQL Server instance, including File Groups, Data Files, Log Files, for better visibility and summary of database storage usage.

**SPACE & CAPACITY PLANNING** See analysis of database space information to pinpoint space-related exceptions. Get assistance in diagnosing and reorganizing storage inefficiencies using an intelligent reorganization wizard. Collect and store key database metadata and performance metrics and perform trend analysis to forecast database growth and usage.

**PROCESS MONITOR** Monitor who is connected to each database along with each session's current activity and other session-related data.

**MONITORING & ALERT NOTIFICATIONS** Improve responsiveness and reduce downtime with centralized basic health monitoring and alert teams on availability, performance and storage.

**JOB MANAGEMENT** Integrates with Microsoft Windows Task Scheduler.

## ENTERPRISE MANAGEMENT

**TROUBLESHOOTING ASSISTANCE** Use the automated IDERA Error Report feature to create a zip file containing important details about your Oracle or SQL Server installation, such as product information, hardware metrics, and necessary database information for troubleshooting.

**LDAP INTEGRATION** Supports LDAP environments.

**JDBC/ODBC AND UNICODE SUPPORT** Connect to those platforms with JDBC/ODBC drivers available. Full Unicode character support throughout the application.

## DEBUGGING & PERFORMANCE OPTIMIZATION

**SQL DEBUGGER** Debugs programmable objects such as stored procedures, functions, packages and triggers.

**SQL PROFILER** Captures metrics of various PL/SQL programmable objects on Oracle 8.1.5 and higher.

**EXECUTION PLAN** Graphical and user-customizable display of a database's internal processing order and priorities for queries. Provides built-in explain plans and performance execution analysis.

## SQL & DATA MANAGEMENT

**QUERY BUILDER** Constructs even the most complicated SQL statements with point and click ease.

**ISQL EDITOR** Allows users to create, save, and execute all SQL code against databases with ease. The ISQL editor offers on-the-fly syntax checking for code and object names, object lookup and code complete, bind variable support, selective statement execution.

**VISUAL DATA EDITOR** Adds, changes, and deletes data from database tables with all referential integrity being enforced.

**DATA MIGRATION** Migrates schema objects and associated table data using wizard-driven utilities.

## SECURITY MANAGEMENT

**USER MANAGEMENT** Manages users, logins, profiles, groups, aliases, and password security.

**ROLE MANAGEMENT** Grants and revokes roles to users and to other roles, as well as system-level and object-level privileges.

**PERMISSIONS MANAGEMENT** Enables users, roles, and permissions modeling at the logical and physical level.

**DATA CLASSIFICATION** Categorizes and labels data and objects according to the level of security and privacy that should be applied to that information.

**ACCOUNT MIGRATION** Migrates accounts between the same or different database platforms.

## SCHEMA MANAGEMENT

**OBJECT MANAGEMENT** Create, drop, or alter a wide variety of database objects, including Oracle-specific schema object types and SQL Server advanced object properties.

**GRAPHICAL OBJECT EDITORS** Moves effortlessly among disparate database schemas using standardized, multi-tabbed editors for each database object type.

**CROSS-PLATFORM SCHEMA KNOWLEDGE** Translates DBA skills across multiple platforms by leveraging full knowledge of the underlying DBMS system catalog, syntax, and alteration rules.

IDERA

IDERA.com

+1 (713) 523-4433

TWITTER [twitter.com/Idera\\_Software](https://twitter.com/Idera_Software)

FACEBOOK [facebook.com/IderaSoftware](https://facebook.com/IderaSoftware)

LINKEDIN [linkedin.com/company/idera-software](https://linkedin.com/company/idera-software)

EMEA +44 1628 684 400

APAC +61 1300 307 211

MEXICO +52 (55) 8421-7980

BRAZIL +55 (11) 3280-1159